

VARIO M1 Sitznische



Mit der VARIO M1 Sitznische - als Bestandteil des M1 Systems - lassen sich Bürolandschaften vielseitig gestalten: als Wartezonen, für Besprechungssituationen oder als Rückzugsort.

Die M1 Sitznische integriert sich in das M1 System und schafft die Möglichkeit Räume neu zu definieren: Raumstrukturen können so sehr unterschiedlich genutzt werden. Die M1 Sitznische mit Rückwand kann als Raumteiler und für geschützte Sitzbereiche eingesetzt werden, ohne Rückwand ist sie eine beiläufige Sitzgelegenheit in offenen Strukturen. Eine optionale Beleuchtung lässt die M1 Sitznische zur Leseinsel werden. Für die Bepolsterung stehen die hochwertigen Schurwollstoff-Kollektionen BLAZER und SYNERGY 170 zur Auswahl oder die Kollektion ERA 170 mit leinenartigem Aussehen, sowie die Kollektion LUCIA mit über 30 Farbtönen.

Maße Sitznische auf Grundplatte mit Stellgleitern

Breite 800, 1200, 1600 mm
Tiefe 600 mm ohne Rückwand
Tiefe 500 mit Rückwand
Höhe 2029 mm

Ausstattungs-elemente

Oberflächen

Uni Dekor Trend 2024



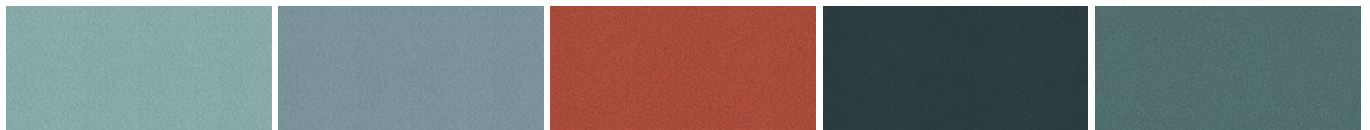
roströt U335 ST9

agave U645 ST9

angora U705 ST9

misty blue U502 ST9

CURA SCREEN 2024



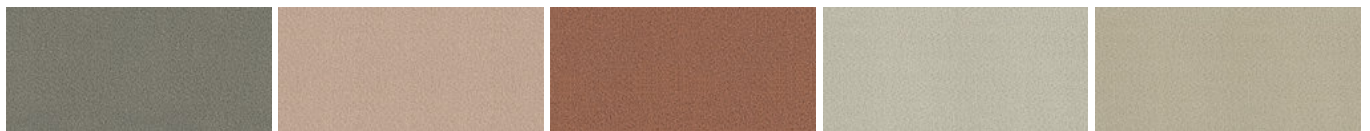
river 66540

sea 66539

koralle 64497

ocean 66465

lake 66467



kitt 61459

sandel 64540

kupfer 61457

clay 61532

sand 61568



merino 61468

moos 68461

salbei 62525

steppe 62526

Uni Dekor



premiumweiß

pastellweiß

nebelgrau

titan

lava



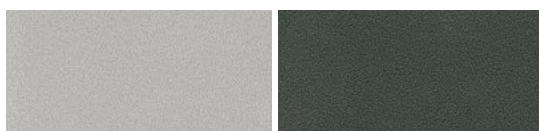
steingrau

porzellan

diamantgrau

schwarz

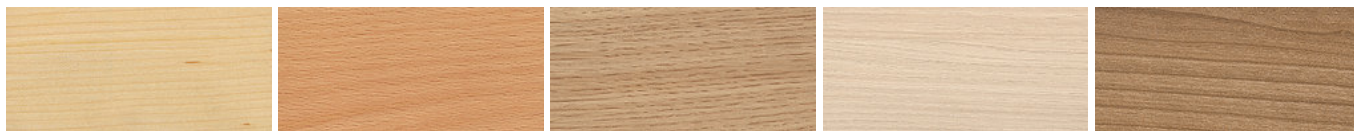
Dekor metallisch



weiß aluminium

graphit metallic

Holzdekor



Ahorn Dekor

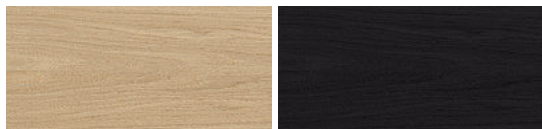
Buche Dekor hell

Eiche Dekor

Akazie Dekor hell

Nussbaum Dekor hell

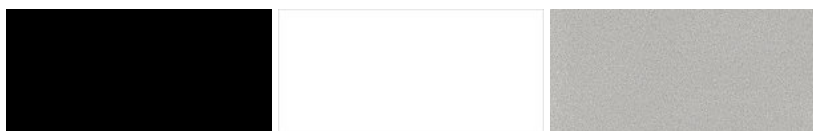
Furnier



Eiche natur

Eiche schwarz

Gestellfarben



tief-schwarz

premiumweiß

weiß aluminium

BLAZER



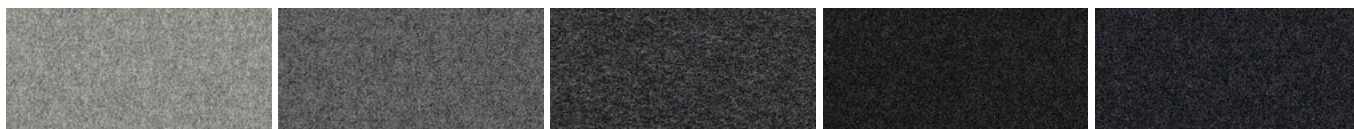
dartmouth CUZ2Q

fairfield CUZ47

st andrews CUZ86

trevelyan CUZ31

silverdale CUZ28



surrey CUZ1E

aberlour CUZ1J

silcoates CUZ30

kingsmead CUZ67

bromsgrove CUZ35



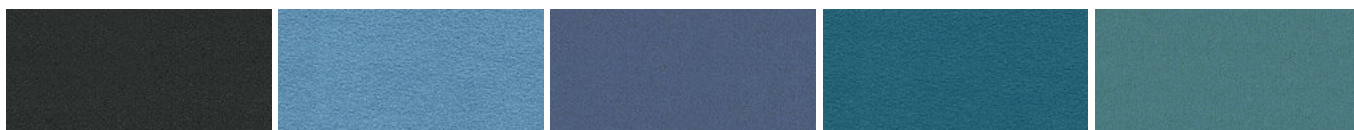
glenalmond CUZ62

napier CUZ08

oxford CUZ09

edinburgh CUZ1Y

newcastle CUZ1W



winchester CUZ12

marymount CUZ3C

manchester CUZ1V

vassar CUZ2U

aston CUZ02



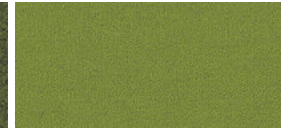
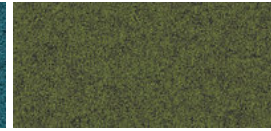
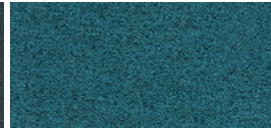
woodcroft CUZ2Z

plymouth CUZ1R

latymer CUZ33

tyndale CUZ2Y

moncrest CUZ3A



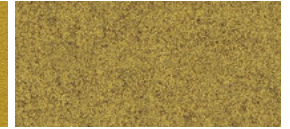
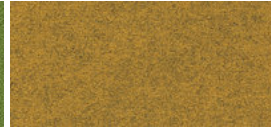
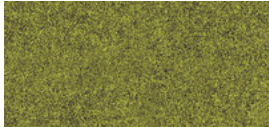
cardiff CUZ1N

hull CUZ1P

abertay CUZ3B

camphill CUZ1K

bryanston CUZ53



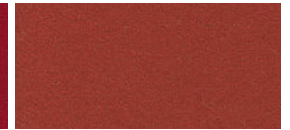
ulster CUZ1F

newport CUZ1L

wesley CUZ82

eynesbury CUZ2W

dunhurst CUZ58



penola CUZ2X

stanford CUZ2R

barlborough CUZ3D

oriel CUZ18

goldsmith CUZ39



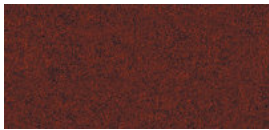
sheffield CUZ1T

scottsdale CUZ3E

banard CUZ2S

magdalene CUZ21

wellington CUZ13



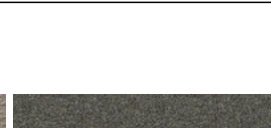
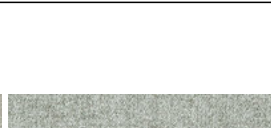
edge hill CUZ90

handcross CUZ63

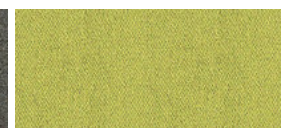
holyoke CUZ2T

glasgow CUZ1M

knightsbridge CUZ26



SYNERGY 170



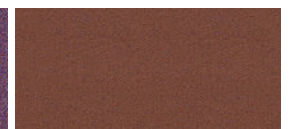
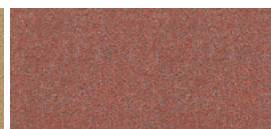
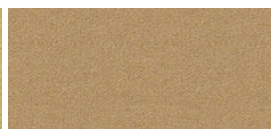
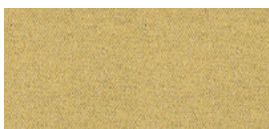
level LDP20

serendipity LDP08

affix LDP32

chemistry LDP35

gather LDP46



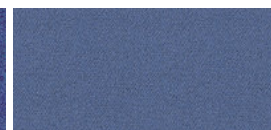
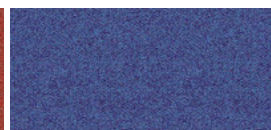
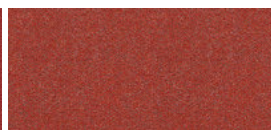
summon LDP45

loop LDP18

work LDP73

fellowship LDP66

combo LDP77



share LDP85

mutual LDP84

collaborate LDP68

guild LDP63

alike LDP62



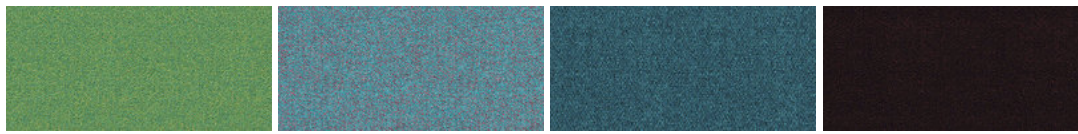
sync LDP69

support LDP55

regard LDP54

append LDP49

compound LDP25



pact LDP53

kinship LDP56

group LDP59

process LDP88

LUCIA



slip YB094

buru YB170

paseo YB019

havana YB009

rum YB086



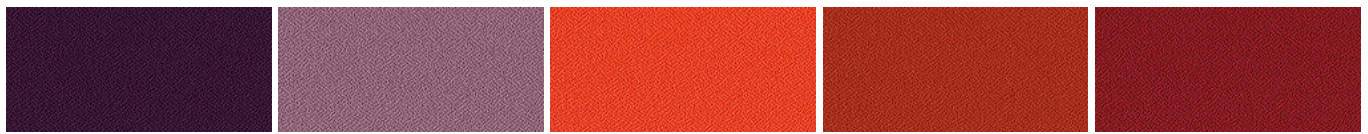
steel YB095

martinique YB004

costa YB026

campeche YB301

windjammer YB047



tarot YB090

bridgetown YB102

tortuga YB168

lobster YB087

calypso YB106



belize YB105

sombrero YB046

blizzard YB108

tequila YB038

aruba YB093



solano YB088

madura YB156

apple YB096

marianna YB157

montserrat YB011



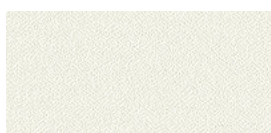
ocean YB100

bluebell YB097

scuba YB089

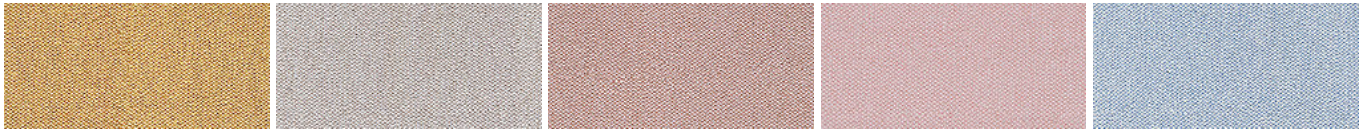
sandstorm YB302

oyster YB107



adobo YB165

ERA 170



splitsecond CSX31

quota CSX41

occurence CSX23

calendar CSX19

allowance CSX38



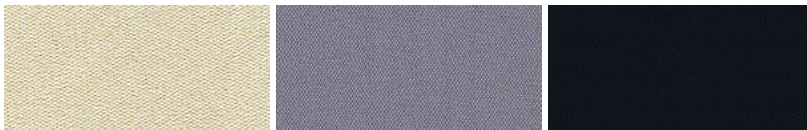
aeon CSX20

range CSX42

analogue CSX33

notation CSX36

futurist CSX01



transition CSX30

forecast CSX11

forward CSX14

Produktfamilie



Das System: M1



M1 Schreibtisch



M1 Stehtisch



M1 Rahmenelement



M1 Locker