

VARIO M8



The VARIO M8 cabinet system is characterized by flat fronts.

Wing doors and drawers are all hinged, which reduces visible joints to a minimum. In addition, the cabinet sides have a continuous, joint-free design.

The top and bottom shelves are structurally sandwiched between the cabinet sides. The grooved 13 mm cabinet back panel recedes 19 mm in the carcass. Additive visible rear panels in many surface finishes - e.g. also covered with fabric - can be inserted flush with the indented rear panel. Alternate installation is thus possible. Sound-absorbing 19 mm thick exposed rear panels are fitted with a hook-in fitting. The resulting hollow space supports the acoustic efficiency. More information on acoustic equipment in our AKUSTIK brochure in the download area.

The equipment with shelves, differentiated compartment division, wardrobe equipment, hanging pull-outs and drawers with front panels offers all known possibilities. Due to the adapted design, dimensions and materials, M8 can be optimally combined with the M7 cabinet system.

Heights without stand element

2 BH: 740 mm
3 BH: 1112 mm
4 BH: 1483 mm
5 BH: 1855 mm
6 BH: 2226 mm

Depths with hinged front:

441 / 626 mm

Depths with hinged front and attached acoustic back panel:

461 / 646 mm

Widths

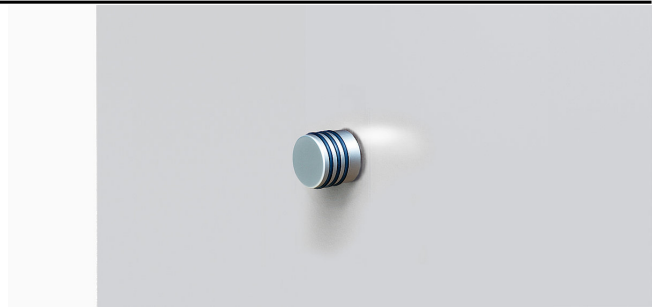
400 / 600 / 800 / 900 / 1000 / 1200 mm (1200 mm with center panel)

Design: Prof. Klaus Michel

Equipment



integrated handle



handle



visible rear wall



acoustic visible rear wall



steel base 40 mm

Surfaces

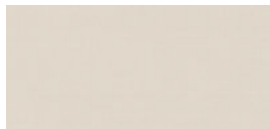
Uni Dekor Trend 2024



rostrot U335 ST9



agave U645 ST9

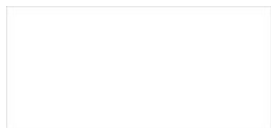


angora U705 ST9

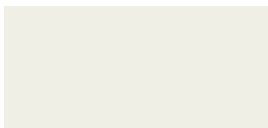


misty blue U502 ST9

decor uni



premium white



pastel white



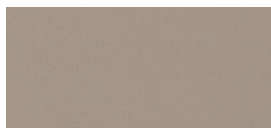
misty grey



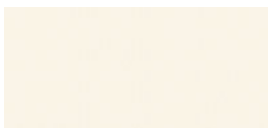
titan



lava



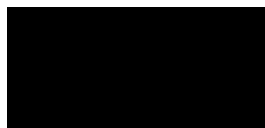
stone grey



porcelain



diamant grey

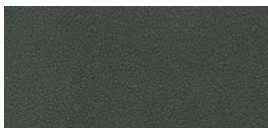


black

decor metallic



white aluminium



graphite metallic

wood-decor



maple decor



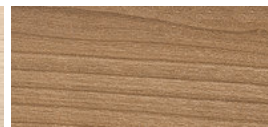
beech decor



oak decor



acacia decor



walnut decor light

Veneer



Oak nature



Oak black

Socket

Base colours



white aluminium

black

white

Product family



M7